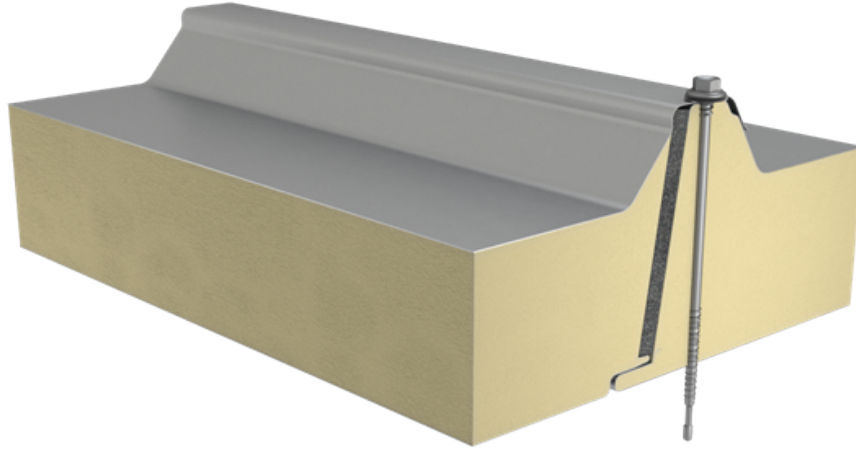


SANDWICH PANEL SP2C E-PIR AGRIPRO



Sandwich panel **SP2C E-PIR AgriPro** is available in thicknesses 80/40 - 140/100 mm.

With its balanced properties, this product is a perfect solution for all **agricultural buildings**. Dedicated special **Csafe™ coating** ensures high performance and **easy maintenance**.

Comparing to standard panel coatings, Csafe™ coating features **high resistance to scratches, corrosion and UV radiation**. It also offers **higher resistance to dirt**.

The core of this sandwich panel is made of rigid, HCFC-free, self-extinguishing and sustainable polyisocyanurate foam (PIR). Its **excellent thermal insulation properties** allow for the decrease of panel thickness which transfers directly to lower transportation and assembly costs, as well as **significant savings** of building's life cycle costs.

Applications:

- Roofs

The information on our website is accurate to the best of our knowledge and understanding. Although every effort has been made to ensure accuracy, the company cannot accept any responsibility for any direct or indirect damages resulting from possible errors or incorrect application of the information of this publication. We reserve the right to make changes.

PROPERTIES

Model name

Sandwich Panel SP2C E-PIR AGRIPRO

Standard module width	1000 mm
Minimum length	2000 mm
Maximum Length	12000 mm
External facing thickness	0.40 mm
Internal facing thickness	0.40 mm

PROPERTIES BY PANEL THICKNESS

Thickness D (mm)	80/40	100/60	120/80	140/100
Weight (kg/m ²)	8.4	9.2	9.9	10.7
U-value (W/m ² K)	0.50	0.34	0.26	0.21
Sound insulation Rw (dB)	24	24	24	24
Reaction to fire	Bs2, d0	B-s2, d0	B-s2, d0	B-s2, d0

All properties are declared in accordance with EN 14509 and related standards.

Changes to sandwich panel fire resistance standards (wall applications)

COATINGS AND COLOURS MATERIALS

Facing	Coating	Corrosivity category	UV resistance	Colours
External	CSAFE *	C4	Ruv4	RAL9002
External	Polyester	C3	Ruv2-3	RAL9002
Internal	CSAFE *	C4	-	RAL9002
Internal	Polyester	C3	-	RAL9002

**) optional material*

UV resistance describes how well the coating is able to keep its original colour and gloss levels in accordance with EN10169. The higher the class, the better the resistance.

Corrosivity categories describe the outdoor climate conditions in accordance with EN12944. The higher the category, the more corrosive environment.

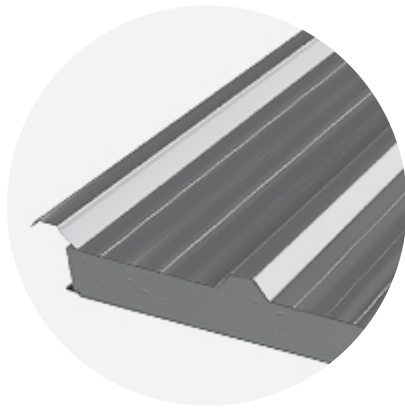
Read more about UV-resistance and corrosivity categories.

COLOURS

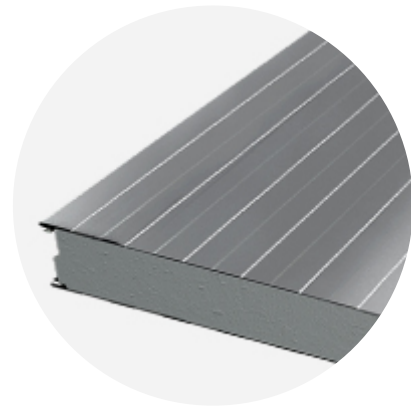


RAL9002 GREY WHITE

PROFILE OPTIONS



TRAPEZOIDAL T



LINEAR L

External profiling

T

Internal profiling

L

DESIGN TOOLS

To make both architectural and structural design work easier, with accurate product information in 3D form, we offer a selection of CAD /

BIM -objects and software tools, which can be downloaded from the Software Toolbox portal.

READY MODELLED BIM OBJECTS

[Download objects for ArchiCAD](#)

[Download objects for Revit](#)

SOFTWARE TOOL TRAYPAN FOR CHOOSING THE OPTIMAL PANEL TYPE

User-friendly TrayPan software takes into account load, temperature, span, U-value, fire resistance and acoustics.

TrayPan contains two user interfaces:

- Optimisation tool for quick and easy pre-selection
- Designer version for detailed structural analysis.

[Download Traypan](#)

DETAIL DRAWING (.DWG)



05 MAY, 2016

[Ruukki-Detail-drawings-SP2E-PIR_dwg_en](#)
ZIP, 3.78 MB



05 MAY, 2016

[Ruukki-Detail_drawings_SP2B_SP2C_SP2D_PIR_en](#)
ZIP, 1.06 MB



05 MAY, 2016

[Ruukki-Detail_drawings_SPB_SPC_SP2D_W_en](#)
ZIP, 875.03 KB

LOAD & SPAN TABLES FOR DIMENSIONING PANELS AGAINST LOADS



05 MAY, 2016

[Ruukki-sandwich-panels-span-tables-agripro-panels](#)
PDF, 387.17 KB



05 MAY, 2016

[Ruukki-load-tables-WE-ENG3](#)
PDF, 295.41 KB



05 MAY, 2016

[Ruukki-load-tables-W-ENG3](#)
PDF, 315.97 KB



05 MAY, 2016

[Ruukki-load-tables-PIR-ENG5](#)
PDF, 385.87 KB

ACCESSORIES

Accessories for sandwich panels include flashings, fasteners, gaskets, and sealing flanges.

These accessories ensure fast assembly, fastening reliability, joint tightness, and aesthetic improvement. They are suitable for external and internal wall surface construction, as well as roofs - for construction works of various sizes at any destination.



05 JUL, 2016

Ruukki accessories for sandwich panels 09.07.2015B

PDF, 3.46 MB

INSTRUCTIONS

ASSEMBLY INSTRUCTIONS

Assembly instructions document includes information about:

- Packing
- Transportation and unloading
- Storing
- Assembling



14 JUL, 2016

Ruukki-INOX-guidelines-for-PIR-sandwich-panels

PDF, 315.45 KB



05 MAY, 2016

Ruukki-Sandwich-panels-General_instructions_for_cold_storage_facilities

PDF, 1.58 MB



05 MAY, 2016

Ruukki-Assembly-instruction-for-sandwich-panels-CEE

PDF, 1.10 MB

MAINTENANCE INSTRUCTIONS

Maintenance instructions document contains information about:

- Washing
- Painting



06 MAY, 2016

Ruukki colour coated steel - Maintenance instructions

PDF, 600.37 KB



06 MAY, 2016

Ruukki powder coated facade claddings - Maintenance instructions

PDF, 602.18 KB

FACADE CLADDING INSTRUCTIONS

Ruukki Forma design instructions explain how to design façade cladding systems on top of Ruukki sandwich panels.



01 JUN, 2016

Ruukki Forma design instructions
PDF, 1012.64 KB

CERTIFICATES & APPROVALS

DECLARATION OF PERFORMANCE



13 JAN, 2020

Declaration of Performance 54/MW/OBO - Oborniki mineral wool cored panels (W, WF, WS)
PDF, 175.13 KB



13 JAN, 2020

Declaration of Performance 53/MW/OBO - Oborniki mineral wool cored panels (WEE, WE, WEF)
PDF, 336.94 KB



06 JUN, 2019

Declaration of Performance 29/E-PIR/OBO - Oborniki panels with PIR core (E-PIR, AgriPro)
PDF, 1.10 MB



06 JUN, 2019

Declaration of Performance 30/X-PIR/OBO - Oborniki panels with PIR core (X-PIR)
PDF, 903.75 KB



07 DEC, 2017

Declaration of Performance 37/X-PIR/OBO - SP2B X-PIR and SP2E X-PIR sandwich panels in stainless steel facing
PDF, 86.79 KB

ENVIRONMENTAL PRODUCT DECLARATION



05 MAY, 2016

Ruukki-Light-weight-sandwich-element-system
PDF, 5.97 MB